

PRSRT STD
U.S. POSTAGE
PAID
MAILING PROS INC.

Paid for by Lowery for Council 2014, PO Box 950, Oceanside, CA 92049. FPPC# 1367346

CHUCK LOWERY

**A Small Business Owner Who Always
Puts Our Neighborhoods First**



ON OUR SIDE

Chuck is fighting to stop the Gregory Canyon Landfill and protect our quality drinking water. He worked with seniors and veterans to defeat Felien's effort to eliminate their housing security.

TESTED

The only candidate who started a manufacturing business and created jobs in Oceanside, Chuck knows how to meet a payroll and balance a budget.

ACCOMPLISHED

Chuck's business skills have strengthened city services by reducing wasteful spending. Chuck negotiated pension reform in the city's fire contracts, and used the savings to improve emergency response.

City Council

**CHUCK
LOWERY**

On Our Side

Endorsed By Oceanside Firefighters and Police Officers

[f ChuckLowery2010](#) | [@LoweryChuck](#) | [ChuckLoweryVideo](#)

MORE GARBAGE FROM CITY HALL POLITICIANS...

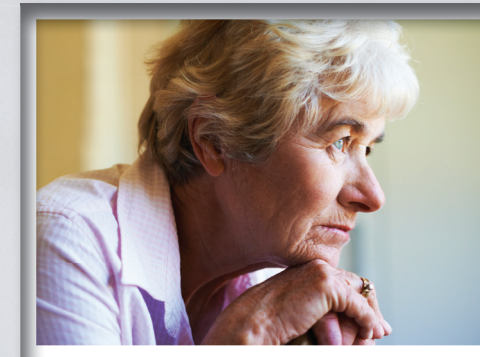
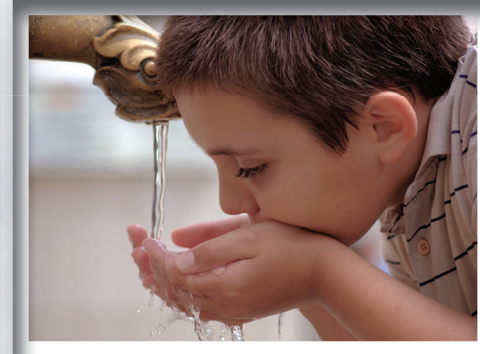




GARY FELIEN'S **ROTTEN CITY HALL RECORD** Threatens Our Drinking Water And Hurts Seniors

FELIEN SUPPORTS THE GREGORY CANYON LANDFILL THAT THREATENS OCEANSIDE'S AFFORDABLE DRINKING WATER

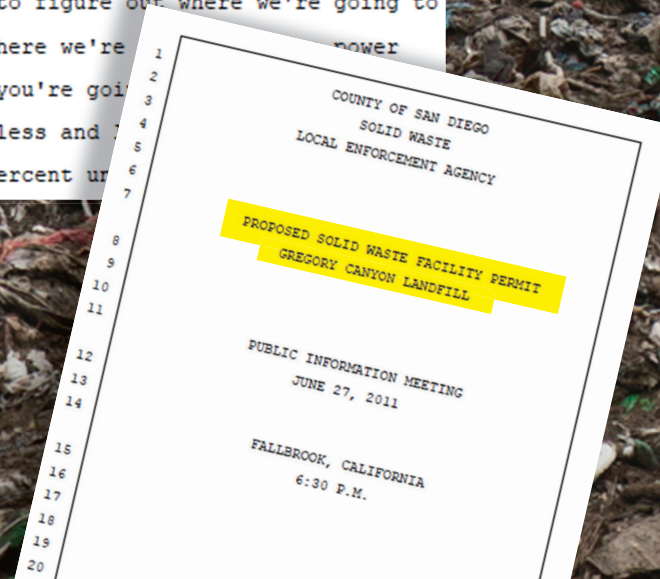
For years, Oceanside has fought to stop the Gregory Canyon Landfill, a planned garbage dump on top of the source of our drinking water. Gary Felien supports the dump and takes campaign money from its developers.



FELIEN VOTED TO ELIMINATE HOUSING SECURITY FOR SENIORS AND VETERANS

Seniors and veterans on fixed incomes rely on city housing protections to live in relative security in mobile home parks. Felien voted to eliminate our housing security and let developers kick seniors to the curb.

I beg of you, please, say no to this landfill.
Thank you.
SUSAN MARKIE: Thank you. Next is the Oceanside City Council, Gary Felien.
GARY FELIEN: I'm Gary Felien, Oceanside City Council, and I came down here to support this project.
I believe California has a responsibility to do responsible infrastructure, you know, when we can't place -- find any way to figure out where we're going to put a dump, anyplace where we're going to put a plant, anyplace where you're going to put a plant, the state is becoming less and less and we see that with the 12 percent up



**ENOUGH GARBAGE FROM CITY HALL
VOTE AGAINST GARY FELIEN**
He's Not For You